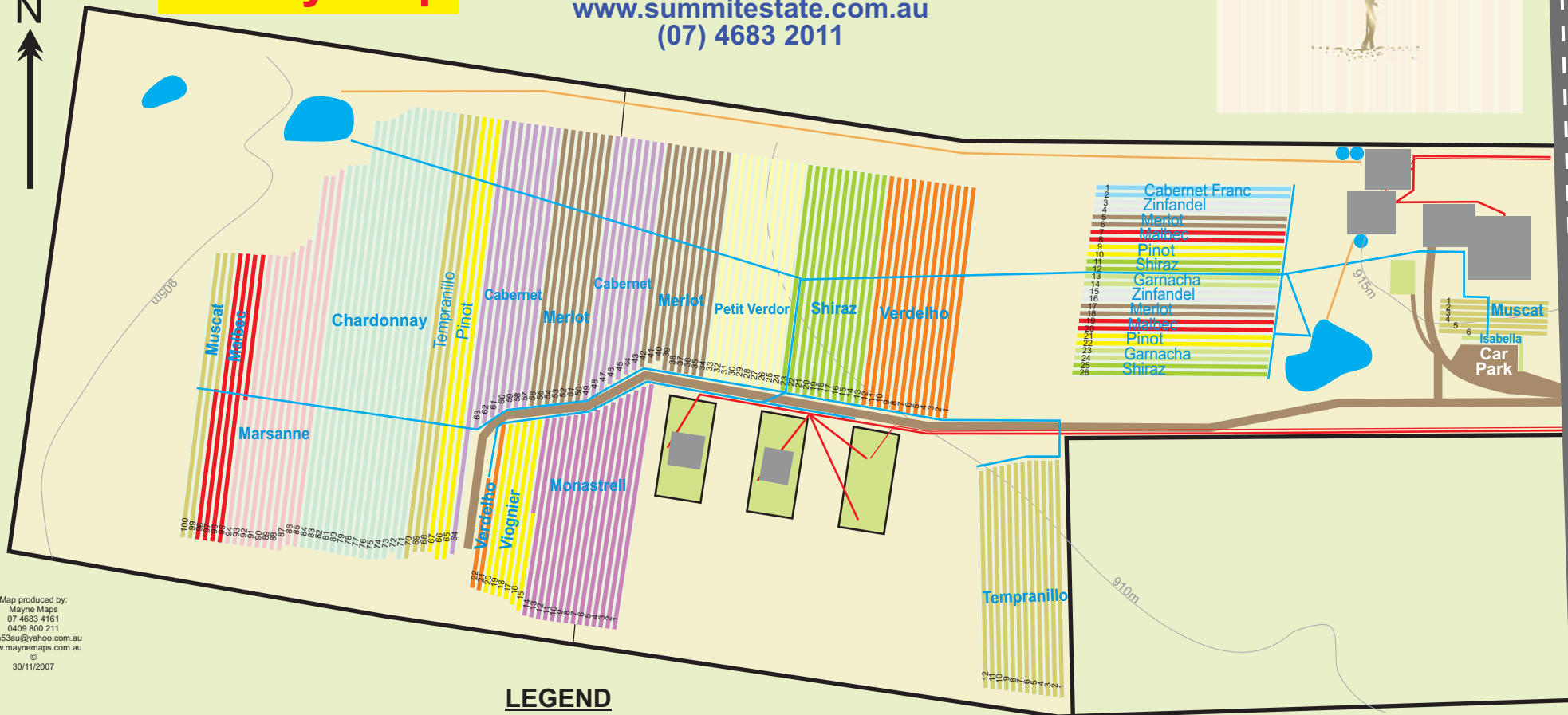
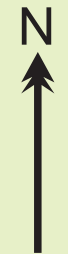




**Print this page
as a sample of a
winery map**

Summit Estate Wines

Open 7 days
10am - 4.30pm
www.summitestate.com.au
(07) 4683 2011



1	Cabernet Franc
2	Zinfandel
3	Merlot
4	Malbec
5	Pinot
6	Shiraz
7	Garnacha
8	Zinfandel
9	Merlot
10	Malbec
11	Pinot
12	Garnacha
13	Zinfandel
14	Merlot
15	Zinfandel
16	Merlot
17	Zinfandel
18	Merlot
19	Malbec
20	Pinot
21	Pinot
22	Garnacha
23	Garnacha
24	Shiraz
25	Shiraz
26	Shiraz

Map produced by:
Mayne Maps
07 4683 4161
0409 800 211
alan53au@yahoo.com.au
www.maynemap.com.au
©
30/11/2007

LEGEND

Cabernet	Malbec	Petit Verdor	Viognier	Power Line
Cabernet Franc	Marsanne	Pinot	Zinfandel	Phone Line
Chardonnay	Merlot	Shiraz		Drain
Garnacha	Monastrell	Tempranillo	Contour Line with Altitude	Irrigation Line
Isabella	Muscat	Verdelho		Road

Page 1 of 2
Press "Page Down" for Page 2

VINEYARD MAPS / WINERY MAPS – Mapping Solutions

Some property owners are buying software and are producing their own property maps.

However, a map from Mayne Maps avoids the need to buy software and spending considerable time and expense in learning to use this software.

To produce a winery map, Alan uses many sources of data, usually at no cost.

He extracts information from satellite images and from digital topographic maps.

The map is updated with any existing maps or aerial images that the owner may have. Spreadsheed or database information is included when available.

Alan from Mayne Maps supplies the map in the form of an image that has been produced using the software Corel Draw.

Corel is very powerful in its graphics capabilities and is not linked to a farm management system or database.

This means that map production is both very economical in time and powerful in its detail and image quality.

The completed map can be exported into a multitude of file types depending on the needs of the client.

These maps can be used for communication with employees, displayed at the cellar door, for promotion on the internet, for developing or selling the property.

If the owner wishes to produce their own maps at a later date using dedicated GIS mapping software, then the images produced by Mayne Maps can be geo-referenced and used as a background to draw the new map. This makes the task for the owner producing his own maps far easier and quicker.

Alan has produced vineyard maps in South Australia, Tasmania and New Zealand without leaving Queensland.

He is now in a position to supply property maps for properties in Europe and America.

Many venues ask for Location Maps to assist visitors to locate the winery when they visit. (See Location Map Tab)

Winery maps often cost less than \$1000, the cost depending on a number of factors.

Contact Mayne Maps and tell Alan about your property and your requirements. He will provide an indication of the cost and also send you samples of maps similar to your property that he has previously produced.

Contact Details: alan53au@yahoo.com.au

(07) 4683 4161 / 0409 800 211

PO Box 95, Glen Aplin, Queensland, Australia 4381